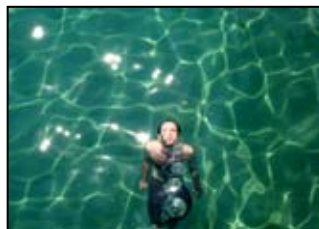


LIFE, LOVE AND
THE PURSUIT
OF WILDERNESS



GREYSTOKE MAHALE



On a far-flung beach along the eastern shores of Lake Tanganyika, below a huge story-book tropical forest, is the tiny sanctuary of Greystoke Mahale. The water is as clear as gin, the air scented and the living is very easy indeed. The forested slopes of the Mahale Mountains rise behind camp, home to the world's largest known population of chimpanzees, with approximately 1000 individuals inhabiting the national park. Each day you can venture out into the forest, to observe and commune with these, our closest relatives, as they groom, wrestle and forage across the leafy floor.

Your home at Greystoke Mahale is in wildly exotic wooden bandabas looking out across the soft sand beach, with interiors fashioned from dhow timber. The six bandabas are open fronted, with dressing rooms, adjoining bathrooms accessible via a short boardwalk with flush toilets and powerful showers, and upstairs chill-out decks; designed with flair, generosity and passion for the most demanding castaway.

The forest itself is special, with eight other species of primate, shy forest mammals, birds, butterflies, giant vines and waterfalls. And if a day's 'chimpanzeeing' wasn't enough, you can snorkel or swim in the clear waters (there are over 250 species of cichlid in the lake), fish or kayak along the lake shore. You can have private barefoot dinners on the beach, or get friendly in the wildly thatched mess, complete with library and upstairs viewing decks. For some evening pizzazz, there's the bar of all bars on the rocks of the headland, with fresh sashimi and iced vodka, and a view out west across the mighty waters of the lake.

It is a physical place, but strangely undemanding. Perhaps because it seems to have been created for Great Apes: figs, flowers, sun, shade, and water.

LOCATION - Kangwena Beach on the edge of Lake Tanganyika in the Mahale Mountains National Park, western Tanzania.

SETTING - The six double bandabas are set the edge of the forest and base of the mountains, looking out over a wide white beach across the clear waters of the lake. As you make the approach to Greystoke Mahale by dhow, the outline of the camp is visible against a backdrop of deep green forest and pale beach. The focal point of Greystoke is the bar and dining area rising up from the sand and loosely modelled on traditional Tongwe architecture

HIGHLIGHTS - The magical forests of the Mahale Mountains, and the many animals who inhabit it including other primates, bushbuck, bush pig, leopard, and amazing birds. Hiking into the forest in search of the chimps. Dinner on the beach under the stars, and sundowners on the dhow. Swimming, snorkelling, kayaking, and fishing in the clear waters of the lake.

PLEASE NOTE - Most guests will see the chimps at least once in a 3-4 day stay, but a sighting is not always guaranteed. Whilst they could be right behind camp one day, the next they could be high in the mountains. The group size for chimp viewing is 6 maximum.

CHILD POLICY - Please note that we do not accept children under the age of 8 at Greystoke Mahale. Only children of 12 and over can view the chimpanzees.

HOW TO GET THERE - There are no roads within 60kms of camp. Access is only by aircraft using Tanganyika Flying Company's shared charter flights which operate on Monday's and Thursday's, or by private charter. Greystoke Mahale is a 90 minute dhow trip from the airstrip.

OPEN - Year round except 15th March - 15th May when the camp closes for maintenance.

